

Douglas County Conservation District



Clean Water Healthy Lands
Bright Future

Newsletter Quarter 2/2019
VOL. 33 ISSUE 2



Protecting Douglas County
Natural Resources Since 1945

Events Calendar:

April 6: Basics of Native Plant Gardening - Lawrence
9:00 AM, Raintree Montessori, 4601 Clinton Parkway,
Lawrence: RSVP grasslandheritage@gmail.com

April 6: Kansas River Celebration 1:00 PM - 3:00 PM,
Burcham Park, 200 Indiana Street, Lawrence

April 7: Paris to Pittsburgh, Movie screening and
discussion: Lawrence Public Library [https://
www.paristopittsburgh.com/](https://www.paristopittsburgh.com/)

April 12: GAPs Certification Training Workshop:
Olathe, K-State Olathe Campus. [https://
www.kansasfarmersunion.com/event/gaps-
certification-training-workshop-olathe-5/](https://www.kansasfarmersunion.com/event/gaps-certification-training-workshop-olathe-5/)

April 18: Basics of Native Plant Gardening - Eudora
7:00 PM, Eudora Community Center: RSVP to
grasslandheritage@gmail.com

April 19: Prairie Night at Lebo Library : RSVP to
grasslandheritage@gmail.com

April 20: Lawrence Earth Day 11:30 - 4:00 PM, South
Park, 1141 Massachusetts St, Lawrence, KS

April 24-25: Eastern Kansas Grazing School,
Celebration Hall, Franklin County Fairgrounds
<http://www.frontierdistrict.k-state.edu>

**April 29: Introduction to Produce Safety and Farm
Tour,** Douglas County Extension Office [http://
www.growinggrowers.org/workshops.html](http://www.growinggrowers.org/workshops.html)

May 4: Equine Pasture Management 2-4 PM, Douglas
County Trail Riders Clubhouse: RSVP
douglasccd1@gmail.com

May 11: World Migratory Bird Day, Baker Wetlands

May 14: Pond Management 6:30-8:00 PM, Douglas
County Fairgrounds Flory Meeting Hall, RSVP:
douglasccd1@gmail.com

May 18: GHF Native Plant Sale 9:00 AM—1:00 PM,
Trinity Episcopal Church Lawn, 1011 Vermont,
Lawrence : RSVP to grasslandheritage@gmail.com

June 1: National Prairie Day 9:00 AM—1:00 PM,
Burroughs Creek Trail at 15th St in Lawrence

PRESCRIBED BURNING



WHO TO CONTACT

Douglas County has a burn hotline for those wishing to burn. Call 785-832-5394 to hear the current burn status and to record your burn with the Douglas County Dispatch Center (as required by the resolution). Be prepared to share the following information when logging your burn:

- Location of the intended burn and the name, address and telephone number of the person responsible
- Duration and schedule of the burning
- Description of the proposed burn

<https://www.douglascountyks.org/depts/emergency-management/open-burning-regulations-and-safety>

BEFORE YOU BURN

Contact your USDA Service Center at (785) 843-4260 or Douglas County Extension Office 785-843-7058 for help developing a burn plan and for information on Workshops.

- **Prepare a burn plan and stick to it.**
- **Always notify your neighbors and local fire department before conducting a prescribed burn.**
- **Call off the prescribed burn if the weather isn't right or it's expected to change during the burn.**

Use the NRCS guidelines to become familiar with the basics of conducting a safe, successful prescribed burn. [NRCS Prescribed Burning Conservation Practice Information Sheet](https://efotg.sc.egov.usda.gov/references/public/MO/PrescribedBurn_InfoSheet_4_08.pdf): [https://
efotg.sc.egov.usda.gov/references/public/MO/
PrescribedBurn_InfoSheet_4_08.pdf](https://efotg.sc.egov.usda.gov/references/public/MO/PrescribedBurn_InfoSheet_4_08.pdf)

To provide leadership and assistance in promoting individual responsibility for the conservation of Douglas County natural resources.

Have You Had Your Soil Tested?

Douglas County Agriculture Producers are eligible for up to 5 free soil tests each year through a grant from the Douglas County Conservation District.

How to Collect Soil Samples

Proper collection of a representative soil sample is important for accuracy and analysis of test results.

1. Decide if your field can be treated as one sample or needs to be broken down into separate smaller samples. If you believe the soil type, previous crop and fertilizer treatments are consistent across the field, treat it as one sample. If soil type and topography change across the field, different crops have been planted on different parts of the field, or there are problem spots, break the field down into smaller units to sample.
2. Using a soil probe, dig vertically to a depth of 4 inches for established fields such as brome, alfalfa or a no-till field. Fields that are worked up should have samples taken from 6 inches. Avoid sampling in old fence rows, dead furrows, low spots, feeding areas, and other areas that might give unusual results. If information is desired on these unusual areas, obtain a separate sample from the area.
3. Take at least 10 – 15 samples from the field and mix the samples together in a clean container to create a representative sample. The more sub samples you take, the more assured you'll be that soil test results are representative of your field. Bring approximately two cups of the mixed soil to the Douglas County Extension Office in a paper bag.
4. Samples should be dry. You can let samples air dry, but do not use heat to dry your samples.

Bring or mail the soil sample(s) to:

**Douglas County K-State Research and Extension,
2110 Harper St.
Lawrence, KS 66046
785-843-7058**

Office hours: Monday – Friday, 8:00 a.m. – 5:00 p.m.



There are more individual organisms in a teaspoon of soil than there are people on earth. Managing for soil health is a matter of maintaining suitable habitat for the myriad of creatures that comprise the soil food web.

Soil Information Sheet - Please provide the following information:

1. Name, complete mailing address, e-mail and phone number
2. Sample depth
3. Previous crop and its yield
4. Intended crop and a yield goal (indicate if this is a new seeding for pastures)
5. If pasture, classify as brome, fescue or native/prairie.

Lab Results

The sample will be sent to the Soil Testing Laboratory at Kansas State University for analysis. Their results will be analyzed by our Agriculture agent and a report will be mailed to you. The average time required to complete the analysis is 2 – 3 weeks. During the spring season, this turn-around time may take longer due to the increase in samples volume.

Find Us Online: <http://www.douglasccd.com/> and Follow us on Facebook: www.facebook.com/douglasccd

Purchase Native Grass Seed from the Conservation District

The Native Warm Season Grass (NWSG) mix consists of:

- 35% Big Bluestem
- 15% Little Bluestem
- 20% Indiangrass
- 10% Sideoats Grama
- 10% Switchgrass

Please Contact the Conservation District for a full list of seed available for grass, wildflower and forbs.

Phone: 785-843-4260 ext 3

Email: douglasccd1@gmail.com



Seed Drill Available to Rent from the Conservation District

The District has purchased a new LandPride 606NT seed drill. Landowners with tractors of 30-40 horse power will now be able to rent the drill from the district and get their seeding projects completed on a schedule that meets their needs.



The drill can easily be towed behind a pickup truck for travel to and from sites. With three seed boxes, warm season grasses, cool season grasses, and forbs can all be seeded.

The rental rate is \$100 check out fee, plus \$10 an acre.

For the landowner who would like to broadcast or frost seed on their own, we also have a **Truax Seed Slinger** that mounts on an ATV.

For more information, estimates, and scheduling/reserving contact the Douglas County Conservation District Manager at 785-843-4260 x6497

The equipment listed below is available from the DCCD to loan out to any interested parties.

Prescribed Burn Equipment

- Drip Torch
- Backpack Sprayer
- Flapper

Soil Testing Equipment

- Soil Compaction Meter
- Soil Probe

What topic you would like to see covered as part of the Conservation Conversation?

Contact our office: 785-843-4260, ext. 3.

2019 State Cost-Share Sign-up Has Begun!

Time to mark your calendar and start thinking about upcoming projects such as:

The Water Resource Cost Share Program (WRCSP) practices include:

- Terraces
- Waterways
- Concrete Structures
- Diversions
- Underground Outlets
- Range and Pasture Seeding
- Wells, tanks and Pumps for livestock watering

The Non-Point Source (NPS) Pollution Program practices include:

- Failed septic systems
- Plugging abandoned water wells
- Critical area seeding
- Livestock waste systems

Sign-up runs April 1 through June 10, 2019.

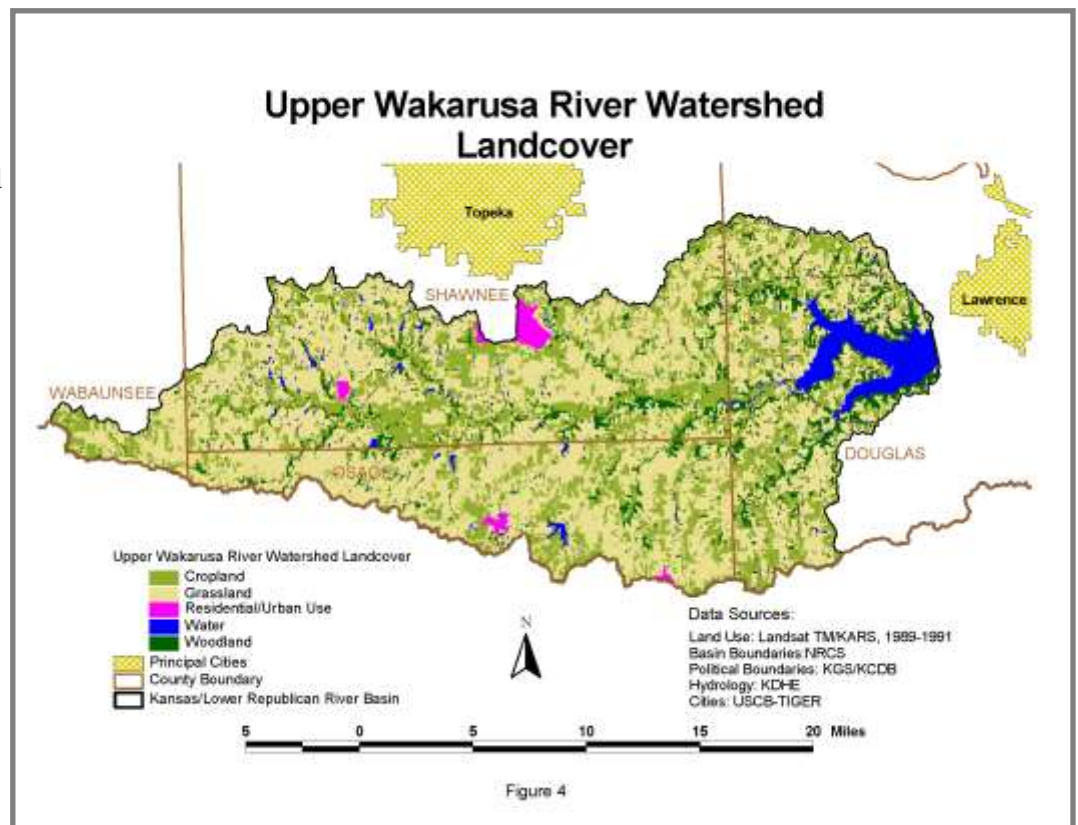
All cost-share practices must be built to Division of Conservation (DOC) approved standards (Kansas, Section IV, Old Section IV) . Specifications are based on USDA Natural Resources Conservation Service (NRCS) Field Office Technical Guide Standards and Specifications. Cost-share funds are allocated using a ranking process approved by the Division of Conservation. Landowners should receive notice of approved projects no later than July 23, 2019.

To apply for funding, please call us (785-843-4260 x129) to discuss how we can help with your next conservation project! An application can be downloaded from our website at www.douglasccd.com/how-to-apply.html.

[Answers to some Frequently asked Questions relating to Cost-Share](#)

In addition to State cost-share funds, the Douglas County Conservation District has additional funds allocated for projects in the Upper Wakarusa Watershed surrounding Clinton Lake.

The Kansas Division of Conservation (DOC) administers state cost-share programs through your Conservation District. The District provides landowners financial and technical assistance to implement approved conservation practices. Funding is provided by the Division of Conservation, Kansas Department of Agriculture through appropriation from the Kansas Water Plan Fund.





The 2019 KS Range Schools are only 4 months away!



Keith Harmony of Fort Hays State talks about estimating forage quantities in native grasslands. KLG.org

It is time to start thinking about attending this year and then register to attend. Learn more about rangeland management in a friendly setting with other ranchers, land managers, range management students and natural resource professionals. You can register at KGLC.org for the schools which cost \$350 per student which covers room, board and tuition for the 2 ½ day schools. Scholarships of \$175 are available for most ranchers and eligible college students while scholarships of \$125 are available for most natural resource agency personnel.

The West or Mixed & Short Grass School is scheduled for August 6-8 at Ringneck Ranch near Tipton, KS, for directions Google “Ringneck Ranch Pheasant Hunting”. The East or Tall-grass School is scheduled for August 20-22 at Camp Wood YMCA near Elmdale, KS.

The theme for both schools this year is **“Managing Outside of Normal”**. There will be rancher and expert panels that will talk about how to plan for all the myriad of ways that weather and other forces can change your plans for your ranch in this and every year so you can focus on caring for your greatest ranching asset, your native grasslands.

Besides learning plant identification, how to figure stocking rates, how to monitor vegetation response, write a drought mitigation plan (and use it) and the rest of basics needed to manage your rangeland, there will be ranchers and natural resource professionals talking with you about how to plan ahead for whatever nature or market forces bring to your ranching enterprise and how to respond to keep your rangeland health high and your livestock productive.

The course agendas will be up on the <http://www.kglc.org/> website by Mid May at the latest!

Learn more at our website, KGLC.org

email barth.crouch@gmail.com or

call 785-452-0780

PLEASE REGISTER BEFORE JULY 24TH.

Do make this the year you attend the

Kansas Range School near you!

And bring your neighbors along!

Equine Pasture Management

May 4th

2:00—4:00 P.M.

Douglas County Trail Riders
Clubhouse

816 N. 1750 Rd

Lawrence, KS 66049

RSVP: 785-843-4260 x 3

douglascdd1@gmail.com



Topics covered:

- General principles of pasture management
- Problems particular to horse pastures
- What to do when you have more horses than you have pasture to feed them

Douglas County Conservation District and Douglas County Trail Riders will host the event with guest speaker Dale Strickler. Dale is the author of *Managing Pasture* and *The Drought-Resilient Farm*. He is a leader in the soil health movement and an agronomist for Green Cover Seed, the nation's leading cover crop-specific seed company. He holds degrees in agronomy from Kansas State University and taught agronomy at Cloud County Community College for 15 years. He has his own ranching operation where he puts his theories in to practice with (usually) good results.

Pond Management

May 14th

6:30 — 8:00 pm

Douglas County
Fairgrounds

2120 Harper Street

Lawrence, KS 66046

RSVP: 785-843-4260 x 3

douglascdd1@gmail.com



Topics Covered:

- Aquatic Weed Management
- Fish management
- Pond water quality
- Build and maintain better ponds

Guest Speakers

Richard Sanders

District Fisheries Biologist

Kansas Dept. of Wildlife, Parks and Tourism

Tim Miller

Supervisor District Conservationist

Natural Resource Conservation District



A hands-on Management Intensive Grazing (MiG) school for producers.

The science of grassland management and forage production is a complex and challenging subject. Matching the nutrition needs of various classes of livestock to the seasonal distribution of yield and quality of forages is a daunting task. Because grazing livestock is selective, unmanaged grazing often results in stands dominated by grass species highly tolerant to grazing or by grasses with poor palatability. At the school we will discuss these concepts more in depth.

The Eastern Kansas Grazing School is limited to a maximum of 35 farms, on a first serve basis. Registration is \$60.00 for the first person from a farm (Includes lunches, snacks and handouts). Additional registrants from the same

farm are \$30.00. Reservations are due by April 10, 2019. To register online go to: <http://www.frontierdistrict.k-state.edu> For more information Call Rod Schaub 785.828.4438

Guest Speakers:

Dale Blasi, Kansas State University

Mark Green, Missouri NRCS

David Hallauer, Meadowlark District

Joe Harner, Kansas State University

Darren Hibdon, Frontier District

Jaymelynn Farney, Kansas State University

Walt Fick, Kansas State University

Wesley Tucker, University of Missouri

Doug Spencer, Kansas NRCS

Conservation Partner Profile

Each quarterly newsletter, we feature one of our “Partners in Conservation”. Whether we cooperate by hosting workshops and lecture series together or helping out at each other’s events, we appreciate our partnerships with groups in the community.

Join the Common Ground Program!



Common Ground is a community gardening and urban agriculture program created by the City of Lawrence in 2012. This past year, our gardens, farms and orchards included 9 sites that were tended by over 272 local residents, producing over 1500 pounds of produce donated.

Applications are now open for the 2019 growing season. There are a number of ways you can participate!

Community Gardens: Interested in joining one of the established garden sites in Lawrence? Applications will be accepted on a rolling basis, but will be first come, first served. Therefore, applicants are encouraged to apply soon! Look online to see which site could best fit your needs.

Incubator Farm: Are you interested in growing for market? Our Incubator Farm just North of Lawrence is the perfect site to try your hand at larger-scale production, with plots ranging from .25 – 1 acre. These sites are available at \$100/acre. Applications due March 8 for priority review, but will be considered thereafter based on availability.

Volunteer: Do you want to get some garden time but not make a full-season commitment? Our gardens often welcome volunteers and groups interested in pitching in for a few hours. Reach out to site managers directly (available on program website), or contact the program to learn more!

New Garden Sites: Does your neighborhood need a garden? We’re interested in hearing from residents about where new sites could be considered for 2020 and beyond.

Apply and learn more at:

www.lawrenceks.org/common-ground

Reach out to :

commonground@lawrenceks.org to let us know of your garden aspirations!



Olathe Livestock Emergency Preparedness Workshop

May 6, 9:00 AM - 3:00 PM

Johnson County Research and Extension
11811 S. Sunset Dr. #1500
Olathe, Kansas

The Kansas Department of Agriculture invites you to join one of our statewide workshops.

Topics that will be covered include:

- Biosecurity
- Disease awareness
- Livestock mortality management
- Lessons learned from other incidents

The workshops are free to attend, please register as lunch will be provided and *space is limited to the first 50 people*. For more information, contact Kelly Oliver at 785-564-6608 or Kelly.Oliver@ks.gov.

To Register: <https://fs22.formsite.com/KansasDeptAg/5t55hiw1kl/index.html>



Growing Good Neighbors

Growing Good Neighbors, a [pilot project from Field-Watch](#), has come to Kansas. Last year, it launched in Missouri where agricultural producers—grape growers, crop growers, livestock producers, beekeepers, specialty crop growers—joined with neighbors, ag retailers, conservationists, and others over a shared meal to foster mutual understanding. This community dinner offers Kansans the opportunity to discuss issues that impact today's agricultural communities and uncover common values.

Growing Good Neighbors Goals:

- Forge new relationships and foster mutual understanding between diverse members of the agriculture community.
- Identify and strengthen shared values between all parties.
- Map sensitive/specialty crops and beehives to build awareness of their locations.
- Develop trust in a voluntary system for collaboration, such as FieldWatch.
- Minimize risk of damages.

Douglas County producers and rural residents interested in learning more can contact Marlin Bates, K-State Research and Extension—Douglas County Director at batesm@ksu.edu or call 785-843-7058.

Monarch Watch Open House & Plant Fundraiser

Saturday, May 11

8:00am-2:00pm

West Campus
University of Kansas
2021 Constant Avenue
Lawrence, Kansas 66047




Are you ready to start a butterfly garden or improve the one you have? If so, plan on attending the Monarch Watch for our annual Spring Open House & Plant Fundraiser.

They will have more than 10,000 butterfly plants (both annuals and perennials), including seedlings of eleven milkweed varieties. Plants ideal for starting butterfly gardens or adding to established gardens. Monarch numbers have been declining and we need to plant milkweeds to sustain the monarch migration.

At the Open House you can learn about creating Monarch Waystations and see the magnificent butterfly and pollinator garden maintained by the Douglas County Master Gardeners. There will be games for the kids inside and out and they can make "seed balls" containing seeds of milkweeds and other butterfly plants that can be used to create habits for monarchs and other butterflies. For more information and a list of plants follow this link: [Monarch Watch Open House](#) or go to <https://monarchwatch.org/>

ALLEN MARKLEY



MARKLEY DITCHING
Backhoes • Trenching • Hauling
Septic Systems • Water Lines

1154 N 800 Rd
Baldwin, KS 66006 (785) 842-5524

Kubota
Sales, Parts & Service



McCONNELL Machinery Co.
1111 E. 17th Avenue, El Dorado, KS 66807

785-843-2676
www.mconnellmachinery.com

ED PEARSON
REALTOR®



202 E. Main
Gardner, KS 66030

Call: 785-700-1872
Office: 913-235-9004
edpearson@coronarealty.com
edpearson.crownrealty.com



ALMA, KANSAS

Producer & Processor of Native Prairie Grass Seed

We provide seed and erosion supplies for reclamation projects, temporary and permanent road mixes, and wildflower seeds. Whether you need native grass seed or erosion products allow us to give you a quote.

"For All Your Seed & Erosion Product Needs"

26401 Fairfield Road, Alma, KS 66401

(785)-765-3415 feyhfarm@kansas.net
Fax: 785-765-4681 www.feyhfarmseed.com



The highest-quality native, local-genotype plants and seed.

Brodhead, WI | Baldwin City, KS | www.restorationnurseries.com



Nickels Farms
& Old School Guide Service
17100 Fairview Rd, McLouth, KS 66054
Mike Nickels
785-393-9308
nickelsfarms@gmail.com
<https://www.oldschoolguideservice.com>
Native Grass Seeding, CRP Maintenance, Forestry Maintenance & Planting, Wildlife Habitat, Erosion Remediation, Weed Control, Pasture Over-Seeding, Land Resource Management

FRONTIERFARMCREDIT.COM



FRONTIER FARM CREDIT

AGRICULTURE IS A TOUGH BUSINESS. YOUR LENDER SHOULD BE, TOO.

We know all about economic cycles in agriculture. That's why we deliver financial strength to help you grow, attractive rates to give you an edge and cash-back dividends that deliver something more.

Learn more by calling the Baldwin City office at 866.268.2900.

1270 N 300 Road
Baldwin City, KS 66006-0858 **AGRICULTURE WORKS HERE..**

The Douglas County Conservation District (DCCD) provides the List of Contractors and Vendors as an information source for Land Owners only.

If you are a Contractor or Vendor and would like to be added to this list, please contact the Douglas County Conservation District .

785-843-4260 x 3

douglasccd1@gmail.com

BRUSH CLEARING

Joe Bauman
785-489-2416

Ralph Guffey
785-633-5498

Farmer Excavating Inc
15440 94th Street
Oskaloosa, KS 66066
Info@FarmerExc.com
Office: [785-224-1791](tel:785-224-1791)
<http://farmerexc.com/>

Frack Pasture Clearing
Dakota Frack
785-248-9341
dakotafrack@hotmail.com

Russ Moore
2137 NW 52nd Street
Topeka, KS 66618
785-286-4094

Doug Porter
Perry, KS
785-597-5971
785-766-7620 (cell)
porterstreeshearing@gmail.com

EARTHWORK

Beeghley Excavating Inc.
1164 N 650th Rd
Baldwin City, KS 66006
785-979-2411

Criqui Construction

PO Box 208
Melvern, KS 66510
785-549-3578
<http://criquiconstruction.com/>

Jayhawk Excavating
PO Box 3322
Lawrence, KS 66046
785-841-1171

King Brothers Construction
Oskaloosa, KS 66066
785-863-2534
<https://www.kings-const.com/>

Lang Dirt Services, LLC
1154 N. 800 Rd
Baldwin City, KS 66006
785-840-4248
langdirtservices@gmail.com
<https://www.facebook.com/Lang-Dirt-Services>

Markley Ditching LLC
1154 N 800 Rd
Baldwin City, KS 66006
785-423-3111

Price Excavating, LLC
Zack Price
785-615-1924
priceexcavating726@gmail.com
<https://www.facebook.com/priceexcavating/>

Ken Taylor

2136 N 100th Rd
Wellsville, KS 66092
785-979-2979

FENCING

Dean Chambers
3473 Texas Rd.
Wellsville, KS 66092
785-883-4789

Smitty's Fence
Tyler Schmidt
913-683-3656

MOWING

Jon Haggard
785-331-9118

NATIVE GRASS DRILLS

Douglas Co. Conservation District
4920 Bob Billings Pkwy
Lawrence, KS 66049
785-843-4260, ext 3
<http://www.douglasccd.com/>

Nickels Farms & Old School Guide Service
17100 Fairview Rd
Mc Louth, KS 66054
785-863-2037
nickelsfarms@gmail.com
<https://oldschoolguideservice.com/>

Find Us Online: <http://www.douglasccd.com/>

Follow us on Facebook: www.facebook.com/douglasccd

***NATIVE GRASS DRILLS
(CONTINUED)*****Kansas Wildlife & Parks**

300 SW Wannamaker Rd.
Topeka, KS
785-273-6740

Brad.rueschhoff@ks.gov

<https://ksoutdoors.com/>

POND MANAGEMENT**Aquatic Environmental Consultants**

422 W. 2nd
Bonner Springs, KS 66012
402-677-8498

tim@aeclakes.com

<https://aeclakes.com/>

PRESCRIBED BURNING**Nickels Farms & Old School Guide Service**

17100 Fairview Rd
Mc Louth, KS 66054
785-863-2037

nickelsfarms@gmail.com

<https://oldschoolguideservice.com/>

Safe Burn

Mike Hirschmann
785-979-2954

Mike.hirschmann12@gmail.com

RESTORATION &***CONSULTATION*****Native Lands**

Courtney Masterson
913-207-8034

For.the.prairie@gmail.com

[https://www.facebook.com/](https://www.facebook.com/ForThePrairie/)

[ForThePrairie/](https://www.facebook.com/ForThePrairie/)

Norman Ecological Consulting, LLC

Lawrence, KS 66049
785-691-9748

info@normanecological.com

normanecological.com

Terra Technologies

1920 West 143rd
Leawood, KS 66224
913-385-9560

<http://terratechnologies.com/>

SEED TESTING LAB**Kansas Crop Improvement .**

2000 Kimball
Manhattan, KS 66502
785-532-6118

<https://www.kscrop.org/>

SOIL TESTING**Kinsey Agricultural Services, Inc.**

315 State Highway 77
Charleston, Missouri 63834
P: (573) 683-3880
F: (573) 683-6227

E: office@kinseyag.com

<http://kinseyag.com/>

TIMBER STAND IMPROVEMENT**Kansas Forest Service**

[List of Contractors](#)

2610 Claflin Road
Manhattan, KS 66502
785.532.3300

<https://www.kansasforests.org/>

Betts Enterprises

Jacob Betts
620-252-5253

Ecotone Forestry

PO Box 339
Ottawa, KS 66067
785-241-9007

Ryan@ecotoneforestry.com

TREE & SHRUB PLANTING**Nickels Farms & Old School Guide Service**

17100 Fairview Rd
Mc Louth, KS 66054
785-863-2037

nickelsfarms@gmail.com

<https://oldschoolguideservice.com/>

TREE VENDORS**Kansas Forest Service**

2610 Claflin Road
Manhattan, KS 66502
785.532.3300

<https://www.kansasforests.org/>

[Conservation Seedlings](#)

WELL DRILLERS**E4 Excavating Inc.**

1452 E 1 Rd
Berryton, KS 66409-9000
785-224-5449

Larsen & Assoc.

1311 E. 25th Street, Ste B
Lawrence, KS 66046
785-841-8707

Phyllis@larsenenvironmental.com

If you are a Contractor or Vendor and would like to be added to this list, please contact the Douglas County Conservation District .

785-843-4260 x 3

douglasccd1@gmail.com

Douglas County Conservation District
4920 Bob Billings Parkway, Suite A
Lawrence, KS 66049
Return Service Requested

Prsrt Std
U.S. Postage
PAID
Lawrence, KS 66049-1996
Permit #132

**Clean Water
Healthy Lands
Bright Future**

www.douglasccd.com

Shipping Address

DOUGLAS COUNTY CONSERVATION DISTRICT

Funding provided by the State Conservation Commission through appropriation from the Kansas Water Plan Fund. All programs and services of the Conservation District are available to anyone without regard to race, color, religion, sex, national origin, age or handicap.

Douglas County Conservation District 785.843.4260, ext. 3

Office Hours: 8:00 a.m. to 4:30 p.m. Monday through Friday

Board of Supervisors:

Jordan Olsen, Chair
Luke Ulrich, Vice Chair
David Brown, Treasurer
Mike Flory, Member
Lowell Neitzel, Member

District Personnel:

Randy Winchester, District Manager
Heather McPeck, Education & Outreach
Jeremy Gaines, Soil Technician

Farm Service Agency

785.843.4260, ext. 2
Johnathon Alley, County Exec. Dir.
Debbie Chappelle, Program Tech.
Jessica Yost, Program Tech.

Natural Resources Conservation Service:

Tim Miller, Supervisory District Conservationist